



La proprietà del presente disegno e' di
DAIKIN APPLIED EUROPE S.p.A.
La riproduzione, anche se parziale, e la diffusione
senza autorizzazione sono vietate a termini di legge.
This document is reserved property of
DAIKIN APPLIED EUROPE S.p.A.
Reproduction or use for any purpose
without authorization is strictly forbidden by law.

Denominazione / Identification
EWYT064CZP÷H-A2

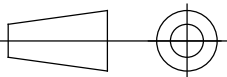
Dis./Dwg.
A.Lorenzi
Ver./Check
M.Caradonna
Appr./Passed
A.Consorti

Codice /Part. No.
EWYT064CZP÷H-A2

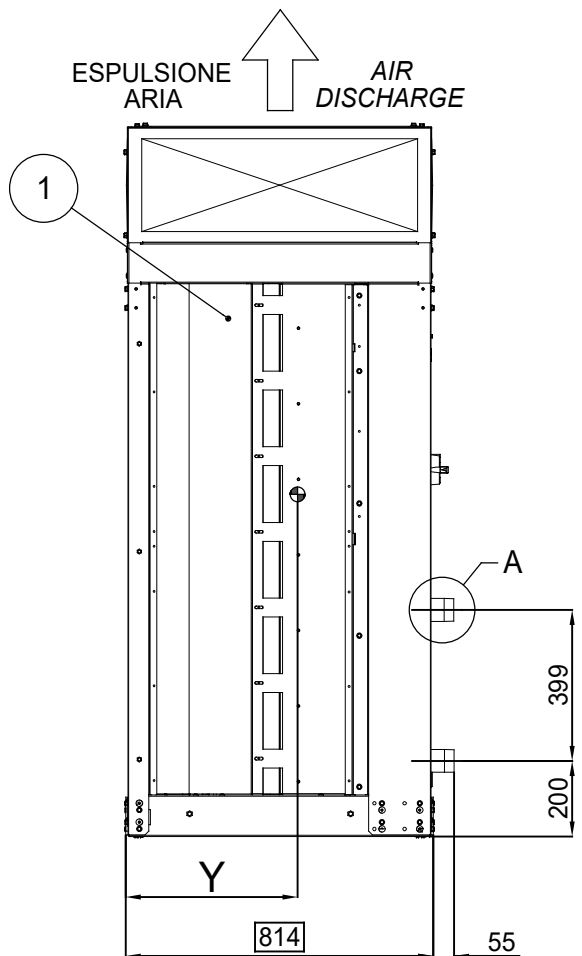
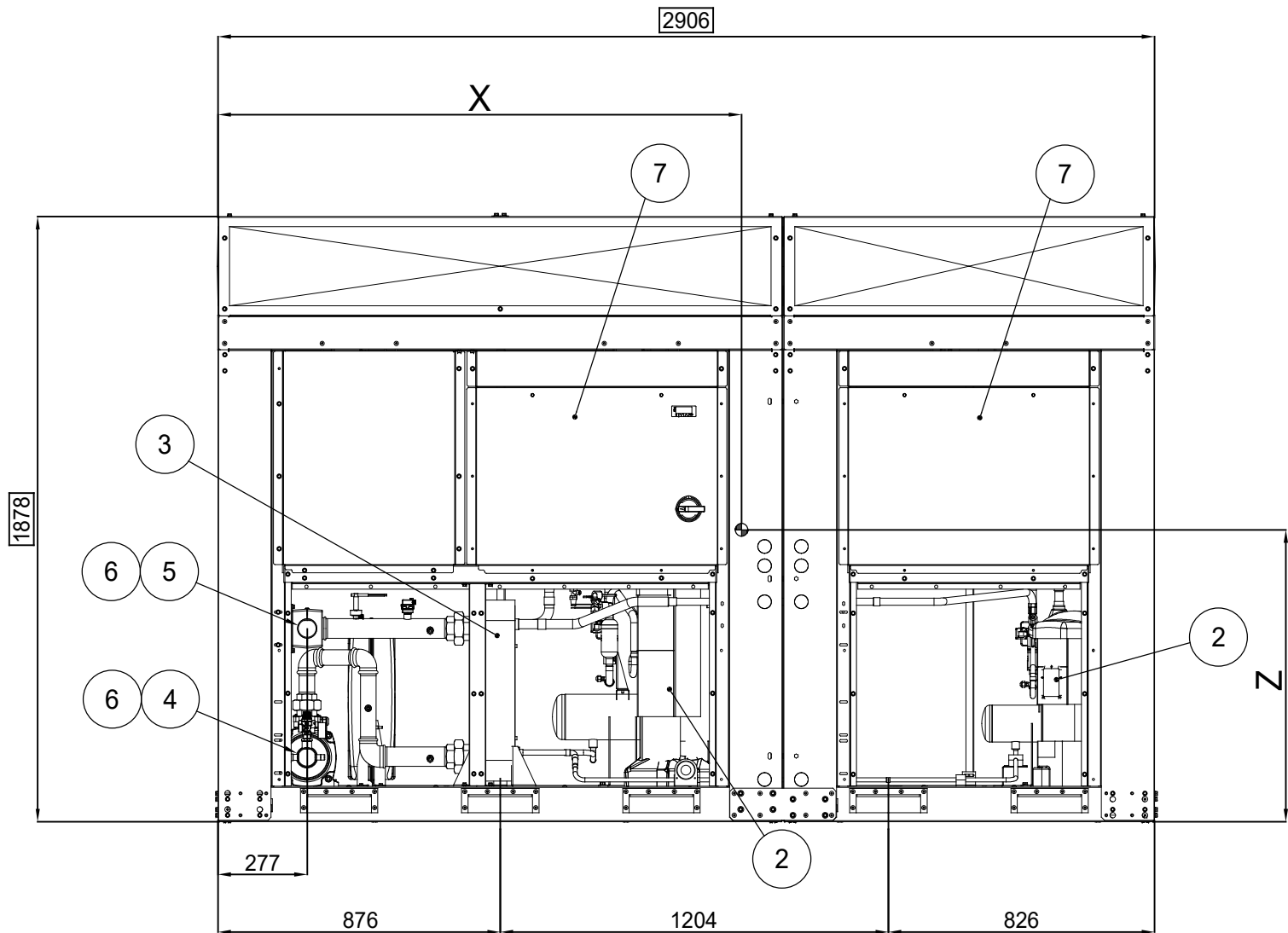
Data/Date
28/12/2020

Foglio-Sheet
A3

Scala-Scale
1:20

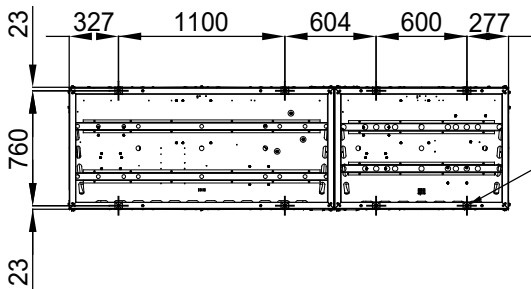


Tolleranza generale
General Tolerance ±20mm



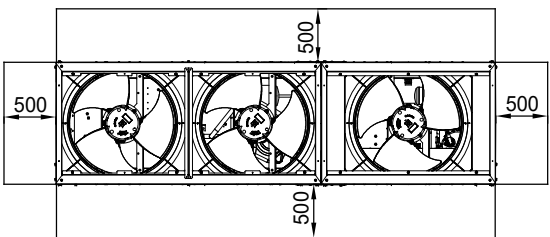
LEGENDA - LEGEND

1. BATTERIA CONDENSANTE
CONDENSER COIL
2. COMPRESSORE
COMPRESSOR
3. EVAPORATORE
EVAPORATOR
4. ENTRATA ACQUA EVAPORATORE/POMPA
EVAPORATOR/PUMP WATER INLET
5. USCITA ACQUA EVAPORATORE
EVAPORATOR WATER OUTLET
6. CONNESSIONI EVAPORATORE/POMPE 2" GAS
EVAPORATOR/PUMPS CONNECTIONS 2" GAS
7. PANNELLO DI COMANDO E CONTROLLO
OPERATING AND CONTROL PANEL
8. FORI Ø12 mm PER MONTAGGIO UNITA'
UNIT MOUNTING HOLES Ø12 mm



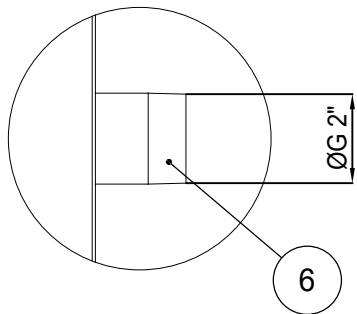
DISPOSIZIONE FORI MONTAGGIO (VISTA DAL BASSO)
MOUNTING HOLES LOCATION (BOTTOM VIEW)

SCALA 1:50
SCALE 1:50

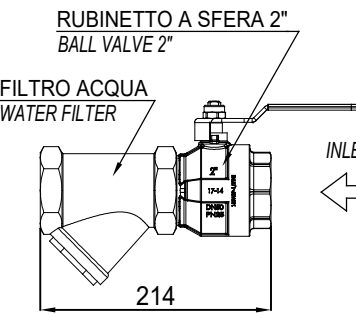
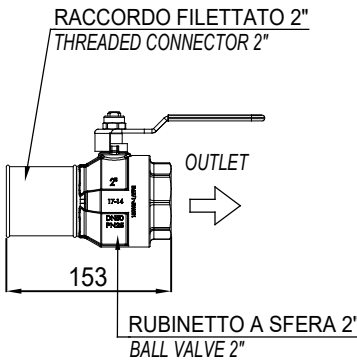


SPAZIO MINIMO NECESSARIO MANUTENZIONE
MINIMUM REQUIRED MAINTENANCE

DETTAGLIO A
DETAIL A



WATER KIT - SHIPPING LOOSE



| VERSIONE VERSION | TIPO CONDENSATORE CONDENSER TYPE | PESO / WEIGHT KG | | BARICENTRO CENTRE OF GRAVITY | | |
|--------------------------------|--|------------------------|----------------------------|---------------------------------|-----|-----|
| | | SPEDIZIONE SHIPPING | FUNZIONAMENTO OPERATING | X | Y | Z |
| EWYT064CZP-A2 EWYT064CZH-A2 | ALLUMINIO / ALUMINUM ACRYLIC COATED | 644 | 650 | 1454 | 467 | 786 |